

VECAPTURE II™

RO SYSTEM

INSTALLATION DIRECTIONS:

Note: These instructions work for both pump operated RO units and RO Units without pumps.

It is recommended to read the complete instructions before beginning the installation.

Note: The installation pictures below are taken from a unit that was installed above the sink for ease of picture taking – under most household situations the RO Unit would normally be installed on the side of the cupboard underneath the kitchen or bathroom sink.

*** Tools Required ***

- Electric Drill
- 5/8" drill bit
- 1/4" drill bit
- 1/8" drill bit
- Adjustable crescent wrench, small
- Utility knife
- Teflon Plumbing tape
- Medium flat head screwdriver
- Centre punch
- Rat-tail file? (if installing on a stainless steel sink)
- pencil



Step 1. Install the Cold Water Supply Pipe Saddle

- 1) Turn the water supply line valve to your home off
- 2) Place the saddle on the COLD water supply line in a place that will not interfere with normal access to the installation area but within easy reach of the RO unit. Thread the brass mounting screw through the threaded hole opposite the valve and insert the pipe holding bar. Matching the bar contour with your supply pipe size. Snug firmly but DO NOT OVERTIGHTEN. Turn the 'T' valve stem on the saddle clockwise until the supply pipe is pierced and the valve is fully closed. Snug the brass bolt by hand then turn it a 1/4 turn with the adjustable wrench. DO NOT OVERTIGHTEN. Keep the valve closed for now.
- 3) You may now turn the water supply to your home ON. Check for leaks around the saddle. Tighten, reseal or reinstall if necessary.



Supply Pipe Saddle



Supply Pipe Saddle OPEN



Supply Pipe Saddle CLOSED

Step 2. Install the Sink Faucet

- 1) Examine the sink. If it has an existing hole for mounting an RO faucet, skip to 4.
- 2) Locate and mark the spot you wish to install the faucet. This can either be on the left rear corner of the sink, or on the countertop. Make sure it does not interfere with the operation of the main faucet and that there is clearance for plumbing and mounting hardware directly below it under the sink or countertop.
- 3) If you have a concrete, porcelain enamel or ceramic sink, it is strongly recommended that a professional install the faucet to avoid chipping and damaging the sink finish.
- 4) Place the Quick Faucet base in the desired location with the inside flat facing the direction you want the faucet to face (you will put the faucet in the base and turn it a ¼ turn to lock it in place later). Align the flat part of where the faucet will connect to the base in the direction you want your faucet to face. Mark the centers of the mounting screw holes and the center faucet shank hole with the pencil and set the faucet mounting base aside. Use the center punch to slightly indent the hole centers. Use the 5/8" bit and drill the center faucet shank hole. Use the rat-tail file to smooth any burrs or rough edges on the faucet shank hole. Next, use the 1/8" bit to notch where the mounting screw will go.
- 5) Align the faucet mounting base with the drilled holes in the countertop. Using the Phillips head screws provided, fasten the mounting base to the countertop. If there is no countertop beneath the steel, use the plastic screw caps to clamp the quick faucet base to the sink. Insert the faucet into the quick faucet base, and turn it a ¼ turn to the desired direction. With the Allen key provided in the faucet kit, tighten the locking screw on the side of the mounting base. It is recommended that you retain the Allen key for use in the future by taping it to the faucet supply tube under the sink or retaining it in a safe place



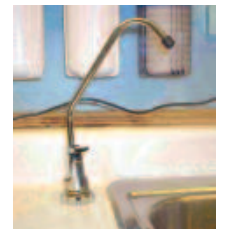
Quick Faucet Base
Screws O Ring



Drill quick faucet base holes



Install quick faucet base



Attach faucet to
quick faucet base

Step 3. Install the Drain Saddle Assembly

- 1) Select the location to install the drain saddle assembly. This is usually on the sink drainpipe and needs to always be located above the "S" trap.
- 2) Position the drain saddle assembly in the selected location and mark the spot through the threaded outlet with a pencil or marker.
- 3) Drill a 1/4" hole at the marked spot. Strip the backing paper from the adhesive side of the square foam pad and apply to the inside of the drain saddle, aligning the hole with the quick connect outlet. Attach the drain saddle to the drainpipe, aligning the quick connect hole on the saddle with the drilled hole on the pipe. Tighten bolts until they are firmly snug – do not over tighten as you may crack the drain pipe or the Drain Saddle clamp. DO NOT OVERTIGHTEN.
- 4) The black drain tube may be inserted directly into the push-on drain port, do not attach tube to RO system at this time.



Step 1: Supply Pipe Saddle OPEN



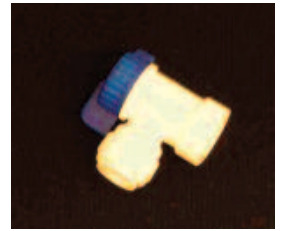
Drill hole for drain saddle assembly



Fasten drain saddle assembly to pipe

Step 4. Install the Tank Valve, Preparing the Storage Tank

1) Wrap the threaded storage tank nipple with two wraps of Teflon tape (clockwise). Thread on tank shutoff valve until snug. Using the wrench, turn an additional 1/4 turn. DO NOT OVERTIGHTEN. Open tank valve to the fully open position.



Storage tank shut off valve

Step 5 (step 7 in the manual). Mounting the RO Unit

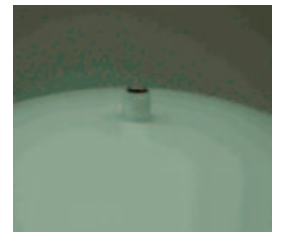
1) While holding the RO unit in its mounting position, mark the holes for the wall screws. Using a 1/8" bit, drill the pilot holes for the screws. Screw in the mounting screws leaving 1/4" protruding. Hang the RO mounting bracket on the screws and tighten.



Storage tank

2) If the unit is to be mounted on wallboard, use plastic screw anchors, available at any builder's supply and follow the manufacturer's directions.

3) **DO NOT INSTALL FILTER CARTRIDGES OR THE RO MEMBRANE AT THIS TIME.** Spin the filter housing sumps onto the RO unit and hand-tighten. On Vecapture II units the clear housing is always installed on the right-hand side. Use the plastic wrench provided to turn an additional 1/4" turn.



Storage tank nipple - apply teflon

Step 6 (Step 8 in the manual). Connect the system Tubing

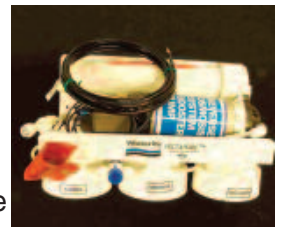
• Making and securing a push connection is simple. First, the end of the pipe should be cut square and any burrs or rough edges removed. Insert the tube firmly and push until the tube end contacts the stop. To disconnect, pull the tube while pushing in the collet ring (the white ring that moves slightly in, and slightly out). The joints may be used over and over again, if necessary.



Storage tank shut off valve installed

1) Connect the cold water supply valve to the first filter housing water inlet push-on fitting (marked "water inlet"), after cutting the 1/4" clear tube to the length required.

2) Connect the black 1/4" tube from the end of the flow restrictor (marked "to drain") to the Drain Saddle push-on connection (your black drain tube may be pre-attached to your RO).



RO Unit

3) Place the tank in the location you have chosen for it. Using the clear 3/8" tube connect the system fitting marked "to tank" to the tank valve.



RO Unit mounted on wall

4) Connect the 3/8" tube attached to the faucet to the system fitting marked "to faucet". If the tubing is not pre-attached to the faucet, cut the 3/8" clear tubing to the desired length and attach the tube to the fitting at the base of the faucet shank to the fitting marked "to faucet" on the RO unit.



Connect system tubing

5) If your unit does not have labels, refer to instructions and diagrams on page 10 of Waterite Instruction manual.



Connect system tubing

Step 7 Filling and Sani-Flushing the System (step 9 in the WaterRite manual)

- 1) Turn on the feed water adapter valve and check all connections for leaks. Do not proceed further until any leaks are fixed.
 - To fix the leaks, just gently jiggle and push the tubing into the push on connections and joints where the leak is coming from.

- 2) Let the RO system and the storage tank fill with water. Open the RO faucet at the sink and let the water run free for 10 minutes. Turn the saddle valve OFF. Leave the faucet open and drain all the water from the tank until water flow stops.



Sani Flushing the system

THOROUGHLY WASH HANDS BEFORE LOADING CARTRIDGES AND MEMBRANE ELEMENTS

- 3) Remove the clear prefilter housing by turning counter clockwise with the housing wrench supplied. Remove all protective wrapping from the filter cartridges. Insert the 5-micron combo carbon/sediment filter cartridge into the clear housing and reassemble housing. The housings are seated with o-rings – DO NOT OVERTIGHTEN – 1/4 turn after hand tight is usually sufficient. Repeat with the white 1-micron sediment cartridge in the middle housing. Install carbon block cartridge in the remaining white filter housing and reassemble.

- 4) Remove the membrane element from its wrapping. Disconnect the 1/4" tube attached to the membrane housing end cap. Unscrew the end cap from the membrane housing. The membrane housing is mounted horizontally on the system's mounting bracket. **See picture below.**

- Insert the membrane element into the housing, o-ring spigot first. Gently push until the membrane seats snugly inside the housing. Re-install housing cap and poly tube.



Membrane Filter

Step 8 (step 10 in the manual). Starting up the System

- 1) Make sure that the Sani-Purge valve is closed. Open water supply saddle valve and let RO system fill with water. Check for leaks and tighten any joints if necessary.



Sani Purge valve closed

- 2) Let the system operate for about 10 minutes. Close the storage tank valve and open the faucet until product water dips out. Check for leaks again and fix if necessary.

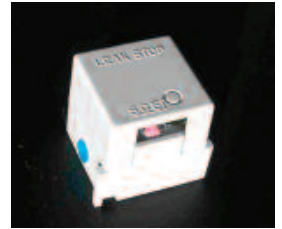
DO NOT USE ANY WATER FROM THE SYSTEM UNTIL THE NEXT STEP IS COMPLETE

- 3) Open the storage tank valve and close the faucet. The system is now operating and filling the storage tank. Allow the tank to fill completely and the system to automatically shut itself off. This step may take 1-3 hours or more. Open the faucet and let the entire tank drain completely. You will see dark carbon dust briefly flush from the carbon filter cartridge – this is harmless and normal for the first flow of water through the cartridge. Allow the system to re-fill the tank. Once completed, your system is ready for use.

Note: You may have to repeat the process of flushing the system again if your TDS readings on the treated water are over 20.

Installation of Leak Stop Flow Interrupter

Note: Installing the Leak Stop Flow Interrupter is optional, by not installing it you will not compromise the RO unit. If you install the Leak Stop Flow Interrupter it will shut down the RO unit if it begins to leak, at which time you will need to purchase another Leak Stop Flow Interrupter to get the RO unit up and running again.



Leak Stop

The Leak Stop is easy to install and will automatically shut off the incoming water being supplied to the RO unit if any water comes in contact with it. Simply mount on the floor of the cabinet directly under where your Vecapture II RO unit is installed. If a leak occurs on the RO system, the sensor is triggered and an internal valve closes, preventing water from running to the RO system and causing water damage.

- 1) Turn the Saddle valve off.
- 2) Using the mounting brackets and the 2-sided tape provided, place the Leak Stop in a convenient location under the RO system, in a place most likely to get wet in the event of a system leak. **MAKE SURE IT IS NOT IN THE WAY OF REMOVING THE MEMBRANE CASINGS.** Make sure the area is **COMPLETELY** free of moisture. Remove the tape film and push down firmly so that tape adheres to surface.
- 3) Remove the Leak stop device.
- 4) Using the screws provided, fasten brackets directly to the base of the cabinet
- 5) Release the pressure from the lines by opening the RO faucet. Disconnect the red water supply tube from the RO by pushing in on the collet ring, and gently jiggling the tube out. Attach the red supply saddle tube to the blue inlet side of the Leak Stop device.
- 6) From the white outlet side of the Leak Stop, connect a (10m) tube to the Leak Stop device and then to the cold-water inlet of the RO system. Re-attach Leak Stop to its mounting brackets.
- 7) Make sure all connections are tight and that the tube has been inserted all the way into the Leak Stop fittings.
- 8) Turn inlet water valve on. Make sure there are no leaks around the fittings.

WARNING!

The Leak Stop should be removed from the mounting brackets and elevated before changing cartridges. This will avoid it coming into contact with water that may be accidentally spilled in the process. Should the Leak Stop device come into contact with any water, the device will be triggered and cannot be re-set. A new Leak Stop one will have to be obtained from your dealer and re-installed.